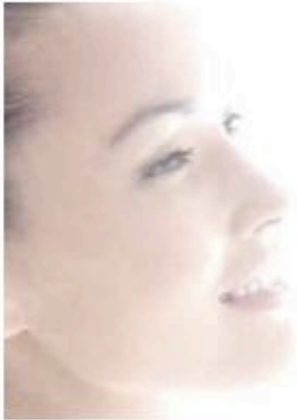


Department Store Brands Pricing Comparative

glimpse™

INTUITIVE SKIN CARE



Glimpse Skin Care System I (Normal to Dry Skin)

- Step 1: Creamy Cleanser
- Step 2: Toner
- Step 3: Serum
- Step 4: Moisturizing Cream

Retail: \$200



Glimpse Skin Care System II (Normal to Combination Skin)

- Step 1: Gel Cleanser
- Step 2: Toner
- Step 3: Serum
- Step 4: Moisturizing Lotion

Retail: \$200



	Cleanser, Toner, Serum and Moisturizer	Eye Cream and Night Cream	Total
AVEDA	\$153	\$125	\$278
CLINIQUE <small>Allergy Tested. 100% Fragrance Free.</small>	\$164	\$119	\$283
 Elizabeth Arden	\$237	\$170	\$407
ESTÉE LAUDER	\$369	\$145	\$514
 GUERLAIN <small>PARIS</small>	\$372	\$188	\$560
 Kiehl's <small>SINCE 1851</small>	\$157	\$36*	\$193
LANCÔME <small>PARIS</small>	\$404	\$282	\$686
 ROC	\$190	\$113	\$303
SHISEIDO	\$197	\$146	\$343

*Night Cream Not Offered